

43RD ANNUAL SCHOOLS' ARTS COMPETITION

PRIMARY 3
TO YEAR 12

2025
ENTRY PACK



Arts Service
ISLAND
Arts Centre

LCCC
Lisburn &
Castlereagh
City Council



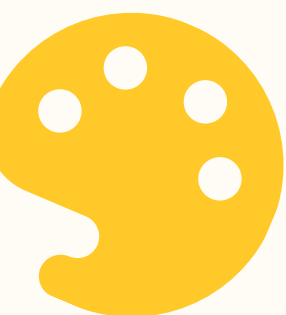
**ISLAND Arts Centre is delighted to announce
that entries to the 2025/2026 competition
are now open!**

**We accept entries from all schools in the Lisburn
and Castlereagh Council Area from
Primary 3 to Year 12.**

Categories open for submission are:

**Drama Performance
Musical Performance
Poetry
Short Story
Visual Art**

**Closing date for all entries is:
5pm on Friday 17th April 2026**





Entry Guidelines

Drama Category

Entries to the Drama category must be made on the official entry form indicating the date, times, and place of the performance. The judging panel will then send adjudicators for judging if available.

At least 14 days' notice must be given for any performance entered.

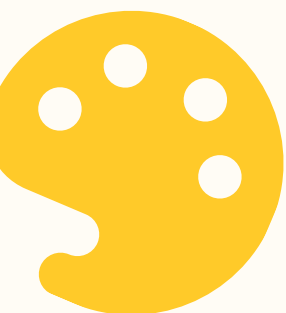
Each school may enter a maximum of 2 performances which may include plays, musicals and/or pantomimes. There are separate categories for Primary, Secondary and Special School.

Musical Performance

Entries are strictly limited to 3 individual entries from each year groups (P3 to Year 12) up to a maximum of 12 entries per school. Group entries are not eligible. Performances may be on any instrument (including voice) and may last a maximum of 2 minutes for Primary level entries and 4 minutes for Secondary level entries.

Entries will be judged at an adjudication day at ISLAND Arts Centre in May 2026 (date TBC).

Entrants will be required to bring an accompanist (if required) to the adjudication day. A piano and music stand will be provided if required.





Entry Guidelines

Visual Art, Poetry and Short Story Categories

Entries are strictly limited to 3 individual entries from each class (P3 to Year 12).

All entries must be clearly labelled using the label template supplied on this entry form. Entries which are not correctly labelled may be disqualified. Please attach entry label to the back of the entry.

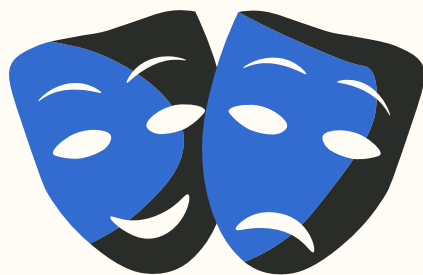
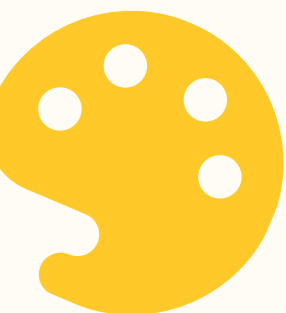
All submissions must be the original work of the young person.

All entries in these categories must be mounted onto card/paper not exceeding A2 size inclusive of mount.

Pupils are encouraged to submit visual art entries in any possible medium but are restricted to wall- mountable pieces only.

Judging

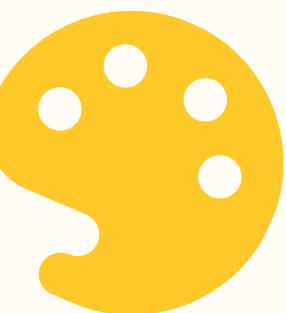
For Visual Art, Poetry and Short Story categories, prizes will be awarded to first, second and third place winners in each year group. For Musical Performance and Drama categories, prizes will be awarded to first, second and third place winners in each category (primary, secondary, special schools). All winning entries will be invited to attend the Gala Awards ceremony date TBC.





Terms and Conditions

- The decision of the judging panel is final. No correspondence will be entered into regarding that decision.
- ISLAND Arts Centre reserves the right to use images of the winning submissions and winners in future arts publicity campaigns.
- ISLAND Arts Centre does not accept responsibility for lost or damaged artwork.
- Schools are responsible for the safe delivery and collection of competition entries.
- All trophies must be returned to ISLAND Arts Centre in the same condition that the school received them by April 2026.
- All entries must be collected by the end of September 2026.
- The judging panel reserves the right to refuse or to cancel any entries, disqualify competitors and prohibit exhibition of works as the judging panel may deem expedient.
- The Annual Schools' Arts Competition is open to schools within the Lisburn & Castlereagh City Council Area.





Entry Labels

Poetry, Short Story and Visual Art

Each entry **MUST** be labelled clearly on the **BACK** of the entry using one of the entry labels below and be submitted by 5pm Friday 17th April 2026. Entries are strictly limited to 3 individual entries from each year group.

Poetry, Short Story and Visual Art

Category:

Name of Pupil:

School:

Year:

Teacher name:

Teacher email:

Poetry, Short Story and Visual Art

Category:

Name of Pupil:

School:

Year:

Teacher name:

Teacher email:

Poetry, Short Story and Visual Art

Category:

Name of Pupil:

School:

Year:

Teacher name:

Teacher email:



Entry Form

Musical Performance

Entries to the Musical Performance category must be submitted by 5pm Friday 17th April 2026 on the form below. Entries are strictly limited to 3 individual entries from each year groups up to a maximum of 12 entries per school. Group Entries are not eligible.

Musical Performance Entry Form

School Name:

Name of Pupil:

Year:

Instrument:

Title of Performance Piece:

Duration:

Teacher's Name:

Teacher's Email:

Date:



Entry Form

Drama Category

Each school may enter a maximum of 2 performances which may include plays, musicals and/or pantomimes. Digital entries accepted. There are separate categories for Primary, Secondary and Special School.

Drama Category Entry Form

School Name:

Primary/Secondary or Special School:

Title of Performance:

Author:

Date(s) of Performance:

Time(s) of Performance:

Venue:

Estimated Duration:

Teacher's Name:

Teacher's Email:

Date: