

**Studio Theatre  
Technical Information  
August 2022**

# **ISLAND** Arts Centre

**Studio Theatre  
Technical Information  
2022**

### Lighting Control

1 x ETC Element with twin touch screen

### Lighting fixtures and luminaires

12 x ETC Source 4 25-50 zoom profiles with M size gobo holders

20 x Strand Quartet Fresnels 650w (18 with barn doors)

8 x 1Kw PAR 64 short nose Par Cans. CP62 Lamps

8 x Selecon Acclaim Fresnels 650w with barn doors

8 x KAM Tri 54 LED par cans (in fixed positions, non-moveable)

4 x CLF ARES XS LED flood (stage/CYC wash, non-moveable)

### House Lighting

8 x CLF ARES XS LED flood

### Dimmers

2 x Strand LD90 (48 dimmers)

2 x ETC Smartpack (24 dimmers)

### Lighting Grid

64 x 15a Socket outlets positioned within the grid.

8 x 15a Floor Sockets. 4 USL & 4 USR

- **All lights are hung in a generic rig which gives a cold wash, a warm wash, LED par can coloured washes and profile spot options. Please refer to LX Plan.**
- **Extra rigging and focusing shall be agreed in advance and will incur additional charges.**

### Sound Control

1 x Yamaha CL1 48 channel mixing desk

### Equipment

1 x Rio 1608 stage box (onstage)

1 x Rio 1608 stage box (tech booth)

2 x Yamaha HS5 studio monitors

4 x Martin Audio F15+ suspended from ceiling (distance from floor to bottom of speakers is 3.5 M)

2 x Martin Audio WS218X Sub speakers

1 x CD player

1 x Mini Disc player

8 x Stage mixes available (please contact for details)

4 x Martin Audio LE 1200 monitors

6 x Martin Audio LE1500 monitors (available on request)

1 x Camco Q6 Power amplifier.

1 x AP30 induction loop amplifier

4 x Communication headsets

4 x Sennheiser ew300 G4 Radio microphone receivers

4 x Sennheiser ew300 G4 e935 Handheld transmitters

2 x Sennheiser ew300 G4 Headset radio transmitters

- **Stage mixes, additional microphones and DI Boxes that are not part of a hire package must be agreed in advance and may incur additional charges.**

### Audio Visual

1	x	Christie LX605 projector hung from centre of auditorium in fixed position
1	x	12ft x 7ft fastfold front projection screen
1	x	9ft x 7ft pulldown front projection screen
1	x	Kramer VP728 switcher (laptop/DVD)
2	x	7" tft video monitors
1	x	Denon DVD player
1	x	VGA input from stage to projector via switcher
1	x	VGA and HDMI input from booth to projector via switcher

### Acting Area / Stage

- 10m Wide by 6m 40cm Deep with a height to the upstage bar of grid of 3.5m and 3.9m to rest of grid
- Acting area is below ground level.
- 2m x 0.9m risers are available for raised stage area of up to 6m x 2.7m

### Curtain Tracks

1	x	40m perimeter curtain track enclosing the entire room.
---	---	--

### Stage drapes

8	x	3m x 3.5m drop drapes in black wool surge to create a perimeter curtain of 24m in total. Drapes have Velcro to edges and tab hooks to top with chain at base.
1	x	White Cyclorama for upstage track (to be hung on request)

## IMPORTANT NOTES

- All users to provide appropriate Risk Assessments in accordance with hire schedule
- Venue must be informed of the use of any naked flames, pyrotechnics etc in advance of arrival and must be included within risk assessment
- Incoming electrical equipment must carry a current Portable Appliance Test (PAT)
- Island Arts Centre operates on a one technician basis, on available standard hours (minimum 4 hours) Any extra technical support must be requested in advance and is subject to availability
- Painting is not permitted in the venue without prior approval
- Screwing into floor is prohibited
- Scenery and props must have appropriate flame protection
- Provide running times of your performance including intervals etc.
- One dressing room is available with two screened areas. Other rooms may be available subject to availability

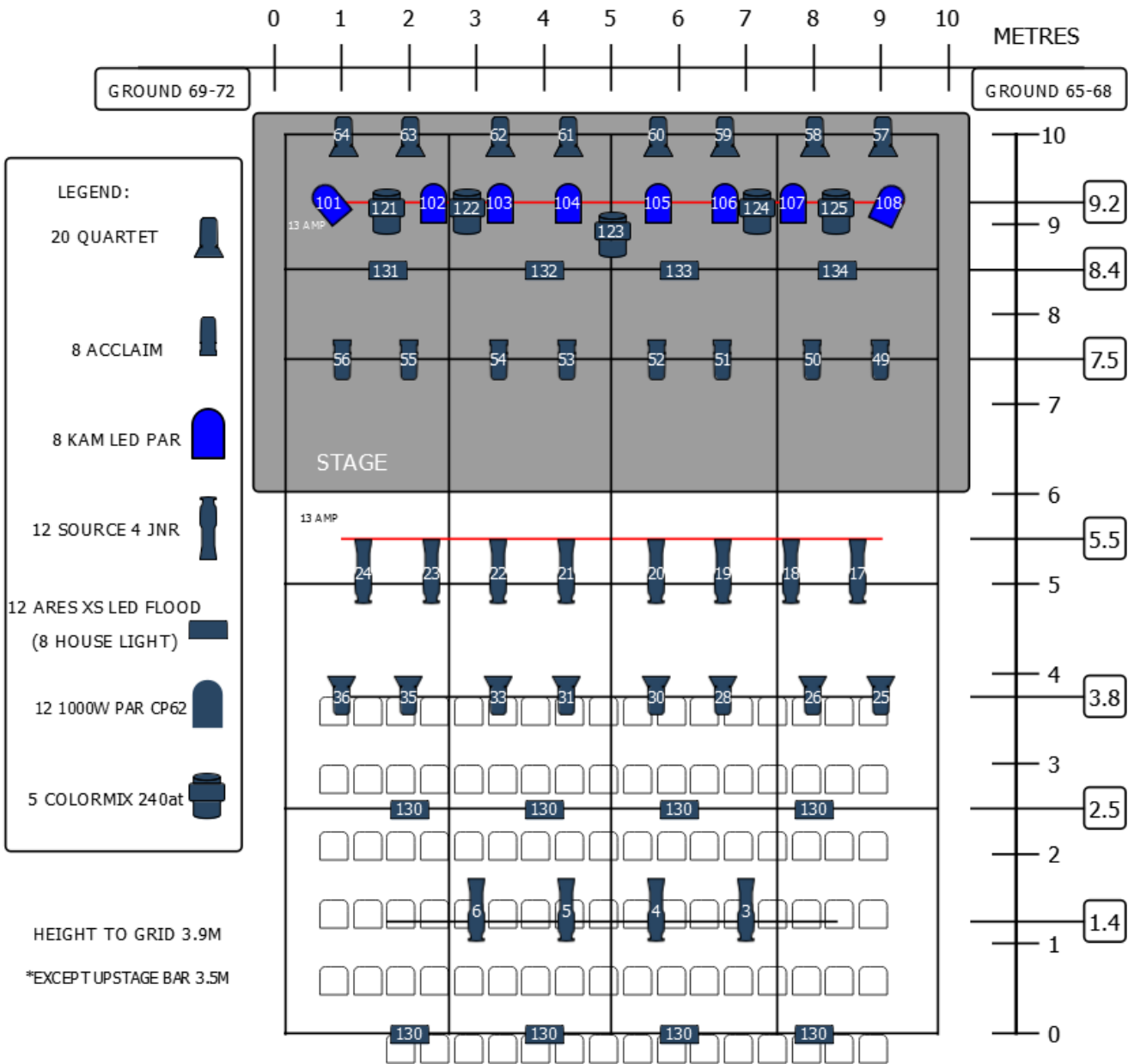
**All patrons are required to give a minimum of six weeks' notice of their technical requirements and arrival time etc.**

If you have any queries regarding this specification please contact –

**Tim Dougherty or Richie Lappin (Arts and Events Technicians)**

telephone: 028 9244 7520 or 028 9244 7514  
email: [arts.technicians@lisburncastlereagh.gov.uk](mailto:arts.technicians@lisburncastlereagh.gov.uk)

Studio Theatre  
 Technical Information  
 August 2022



STUDIO THEATRE GENERIC RIG 2019